



Agenda Item No. 9

Dundry View Neighbourhood Partnership

Monday 7th July 2014

Report of: Keith Houghton, Neighbourhoods and Communities Department

Title: NP Coordinator's Report and NP Achievements 2013/2014

Contact: 0117 922 2135 / keith.houghton@bristol.gov.uk

Recommendations

1. To note the issues raised at June 2013 Neighbourhood Forum events **(to be tabled)**
2. To note the progress on development of the Bishopsworth Pool site options **(Item 2)**
3. To note the update on securing the future of the Hareclive Youth Centre **(Item 3)**
4. To note the progress on taking forward work arising from the Dundry View Hate Crime/Community Cohesion Research **(Item 4)**
5. To approve the new version of the Parks Improvement Plan **(item 5 & Appendix 1)**
6. To note the offer of £10,000 Grant Fund to the NP for the Green Capital 2015 and to approve the recommendation on developing proposals to spend the Grant through the Pride of Place event in August. This could include scheduling an additional NP to approve any bids which are put forward. **(item 6)**
7. To note the update on BCC's restructure and future work to take forward the NP Review and to approve the recommendation to develop responses to the offer to influence the Parks Maintenance Contract at the August PoP meeting **(item 7)**
8. To consider a response to the option of undevolving Carriageway Surface Dressing and Footways Maintenance budgets **(item 8)**

1. Neighbourhood Forums feedback

Neighbourhood Forums took place in all three wards during the week beginning 2nd June 2014. Issues raised will be tabled at the NP meeting

2. Bishopworth Pool Update

- The report recommending the Community Asset Transfer of the Pool to Transition CIC is currently with the Service Director of City Property. A final decision will take place in mid-July 2014
- Transition CIC and BCC have agreed a Service Agreement to underpin the CAT which secures the Village Hub/Community use of the site
- A new Friends of Bishopsworth Pool group has set itself up at a recent meeting on 9th June 2014. They are waiting to meet to develop more detailed plans until the situation with the CAT and the lease arrangements for the outside of the pool and parking spaces are clarified
- BCC Parking is working to look at potential ways of managing the community parking element of the 'Village Hub' so that it is used for short-term parking effectively, not commuter parking
- The work to consult and provide routes for local residents to express their opinions about the indoor Skateboard Centre and Village Hub proposal has been a major project which the NP has delivered in 2013/14. It resulted in a very strong endorsement of the proposal and as a result the development is now eagerly awaited in the community



- A clear timetable for the re-development of the site should become available as soon as the decision about the CAT is made which can be publicised

3. Hareclive Youth Centre

- Hareclive Youth Centre is being renovated for use by Kids Company as the base for their education work with young people outside school. Kids Company will work closely with Learning Partnership West to support and enhance provision of youth services at the site.
- This solution secures the Youth Centre until 2016 at least, which is the current extent of the contract which Kids Company holds from the City Council

4. Dundry View Hate Crime and Community Cohesion Research

- The delivery of the research into issues of Hate Crime and Community Cohesion has been another major piece of work which the NP has co-ordinated in 2013/14.
- The research itself took place across the summer months in 2013, interviewing local residents and local voluntary and statutory staff and organisation representatives and researching good practice.
- A presentation summary of the key findings of the research was presented to the NP in March 2014, along with emerging work strands to improve the way victims are supported, perpetrators are dealt with and the whole community can increase its capacity to welcome and include diverse communities
- A multi-agency Problem Solving Group started work in September 2013 to develop a programme of action
- Different strands of work are being developed:
 - A Community Cohesion Charter is being created with two levels; Level one will enable a wide range of groups, local organisations and businesses to demonstrate that they understand hate crime; how to report it and how to refer to support agencies as well as making a commitment to celebrate all communities in Dundry View; Level two will be for organisations which have a more involved role in supporting victims or dealing with perpetrators and will ask for more detailed evidence of good practice. A Charter logo will be designed with local young people which can be displayed across the neighbourhood to support anti-hate/prejudice stance and build community cohesion

- A publicity campaign is planned to deliver increased awareness of hate crime and support for Dundry View as a welcoming place for all over several phases.
- The next step with both the above pieces of work is to recruit local adults and young people to shape their development and help design the campaign materials and methods.
- A new support group for victims of hate crime/prejudice-based incidents is being set up by SARI – Planet Dundry View, based on the successful work which has been delivered for several years in Southmead. The aim of the group is to build the support and encouragement and networks of often isolated victims so they feel able to remain living in Dundry View, rather than, as often happens, moving away to other parts of the city.
- Other strands of work are also in the pipeline to improve how hate crime is managed and to increase community cohesion.

5. New Parks Priorities Plan

- The Pride of Place Group has been working on updating the Parks Priorities Action Plan over the last year. They used the Action Plan workshops and Neighbourhood Forums to consult on proposals and priorities to identify a wider set of aspirations to improve parks and open spaces in the neighbourhood.
- The new Plan is a work-in-progress and will now form the basis of the Groups future work and any recommendations which the Group puts forward to the NP around spend from future S106 or CIL allocations.
- Devolved monies are nearly all allocated so a key task which will need to be explored over the coming year is to identify and support groups to apply for external and charitable sources of funding to achieve the improvements set out in the new Plan.
- **The Plan is attached at Appendix 1**

6. Green Capital 2105 update

Bristol 2015 Neighbourhood Partnerships Fund (Green Capital Projects) – Overview for NPs

The Bristol 2015 Neighbourhood Partnerships Fund is the first of three Bristol 2015 grant-funding opportunities, collectively worth £2m, to be launched this summer. This is divided into:

1. £250k Bristol 2015 Neighbourhood Partnerships Fund – money allocated through NPs with an initial £10,000 available to each NP (already launched)
2. £250k Bristol 2015 Small Grants Fund - individual grants of up to £10,000 supporting projects that are citywide, multi-neighbourhood, or do not fit easily into a neighbourhood structure (launched in July)
3. £1.5m Bristol 2015 Strategic Grants Fund – funding of £25k – £50k for larger strategic projects (launched in August)

How much is available to NPs?

The Bristol 2015 NP fund is £250k. Initially, £10,000 has been allocated to each NP. The remaining £110k will become available when NPs have allocated / spent the initial £10,000 and will be focussed on areas of greater need and areas with additional ideas and projects.

What is the funding for?

The aim of the fund is to enable local groups to launch events and projects that will help change attitudes and behaviour towards sustainable living, and to enable every neighbourhood in the city can play an active part in identifying and delivering projects for Bristol's European Green Capital year.

The funding is aimed at projects which deliver against one or more of the following priorities:

- Increasing people's access to affordable, healthy, sustainable food
- Enabling more people to access affordable energy
- Inspiring and educating people about nature and how to care for it
- Providing activities and initiatives that help people re-use, repair, and share materials
- Helping people discover more sustainable transport (e.g. walking, cycling or public transport)

Please note that there is no expectation that the project will meet more than one priority.

How will the funding be allocated?

Neighbourhood Partnerships will decide how this funding is allocated. The decisions are made at Neighbourhood Partnership meetings by the whole NP.

An application form and guidance notes have been produced for local groups to apply for the funding from their Neighbourhood Partnerships.

Neighbourhood Partnerships may also want to proactively allocate their funding to activities in their neighbourhood where there is a clearly identified need or to enhance existing activities for Green Capital year (i.e. without a group applying through the application process).

Is there an upper limit to the amount of funding groups can apply for?

No. Neighbourhood Partnerships could specify this if this is appropriate to the neighbourhood. It is worth noting that if organisations want larger grants, they may be eligible for the £250k small grants fund for grants of up to £10,000 per grant, which is being launched in July. The application process for the larger grants will be similar and the applications can be passed between the grants funds.

What are the timescales?

Bristol Green Capital year commences on 1st January 2015. The programme of activities funded by the Neighbourhood Partnership fund should take place between 1st January 2015 and 31st December 2015, with activities spread out throughout the year across Bristol.

Neighbourhood Partnerships may want to consider inviting applications as soon as possible to fit in with the Wellbeing funding, and to run the Bristol 2015 fund alongside the Wellbeing process. We are encouraging NPs to start make decisions about this funding at their **September/October** meetings. After the September/October meetings, the additional £110k of funding will be considered again.

Recommendation: That the NP asks the Pride of Place Group to consider how best to use this funding at its extra meeting in August 2014. The NP may want to hold an extra meeting between September and December in order to make decisions about this Green Capital funding if a September NP meeting cannot consider applications because of too short a time between the meeting in August and the 29th September meeting

7. Neighbourhood Management Update

See Appendix 2, from Gemma Dando, BCC Service Manager - Neighbourhood Management

Recommendation: That the NP asks the Pride of Place Group to consider how it might influence the new Parks Maintenance contract at

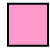
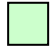
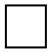


the extra meeting it is planning to hold in August.

8. Feedback sought on option to remove the Carriageway Surface Dressing and Footways Maintenance budgets from the NP's devolved funding

- The NP Review included a number of comments suggesting that these devolved budgets were not effective devolved budgets for NP decision making as they are largely based on technical assessments by Highways officers
- The opinion is sought from the NP whether it would support the undevolving of either of these budgets
- The NP would still be able to influence the choice of Footway maintenance schemes by receiving a report from Highways for comment and by raising potential footway schemes through Forums and the Transport sub-group.

Recommendation: That the NP considers its response to the question to feedback to the Neighbourhood Management Service Manager.

Parks and Green Spaces Investment Priorities Plan in Dundry View with s106 allocations (April 2014)

-  - indicates that this work has been delivered or is fully funded and in process of being delivered.
-  - indicates partial funding found – more needed
-  - indicates that no funding has been allocated or delivery planned
-  indicates this is an outstanding priority from the original 9
-  indicates new priority from 2014

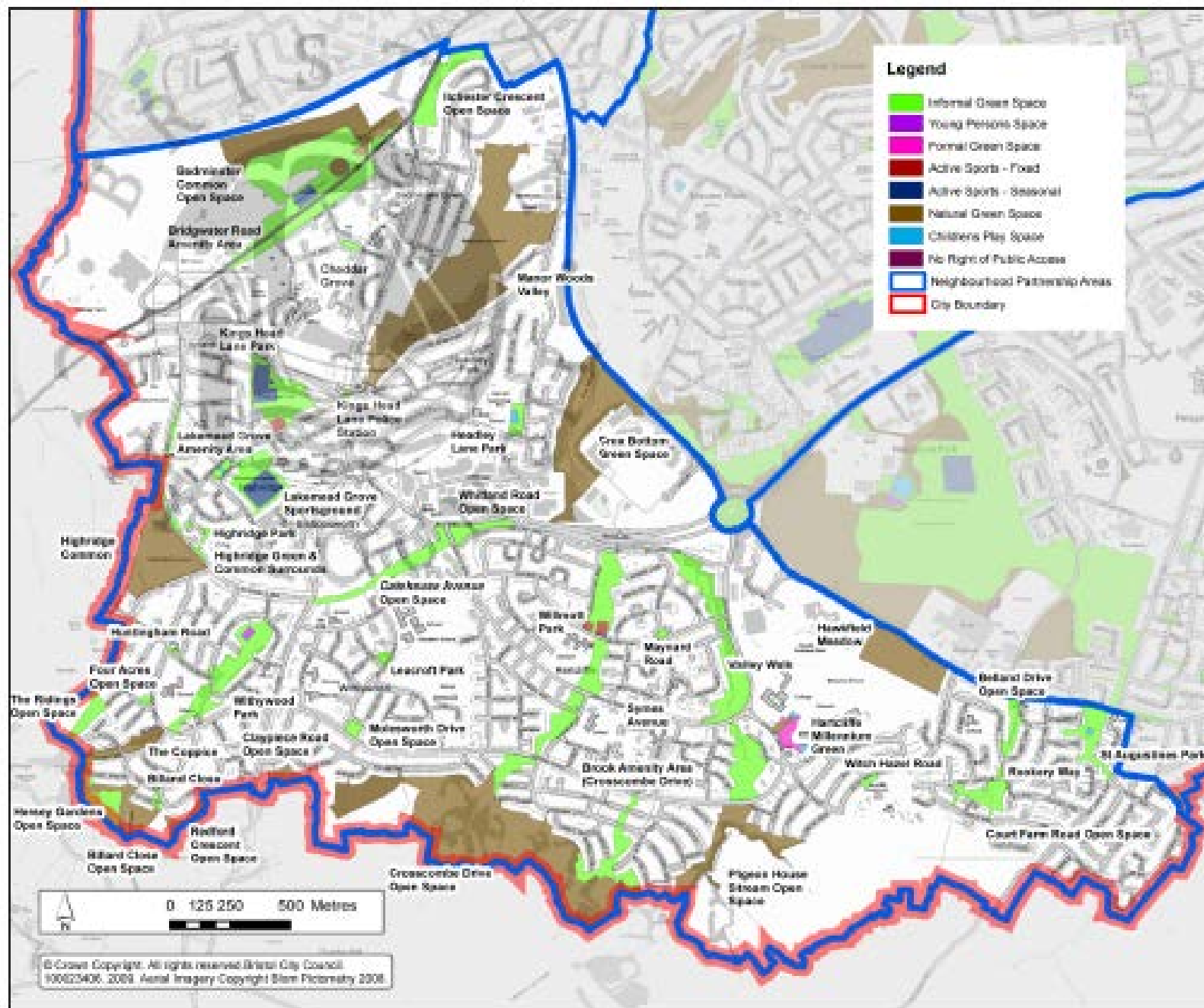
Parks and Green Spaces Improvement priority categories

1. New and improved play spaces
2. Improving accessibility for all user groups
3. Improving sports provision
4. **Improving access to wildlife** - Wildlife should be included as part of any improvement scheme in the Neighbourhood Partnership and after consideration to what the needs and opportunities in relation to wildlife are.
5. Management plans

General Issues

Green Corridors: develop wildlife corridors across Dundry View? Discuss further

De-culverting of streams? Discuss further



Bedminster Down Common

Friends of Group in place?: Yes

Contact Details:

Website:

Funding History (from 2011):



Spending Priority	Objective	Approximate cost	s106 allocation agreed by Neighbourhood Committee	Notes
1. New and improved play spaces	To better meet Bristol's Distance Standard set out in the Parks and Green Space Strategy (PGSS). Both facilities are required to satisfy gaps in provision for children's play.	?		

2. Improving accessibility for all user groups	Improved paths at the following sites highlighted as the highest priority –Bedminster Down Common.			
4. Improving access to wildlife	Management of trees and coppicing			
5. Action plans	Needs an Action/Management Plan. Group needed Coppicing of wood Seats, paths, bins on flat area – behind allotments between circle of trees and wood. Public right of way is being looked into – improved			

King's Head Lane Park

Friends of Group in place?:

Contact Details:

Website:

Funding History (from 2011):



Spending Priority	Objective	Approximate cost	s106 allocation agreed by Neighbourhood Committee	Notes
2. Improving accessibility for all user groups	Improved paths from Greylands to Kings Head Lane Park with improved gate.		£7,487.10 plus £3,475.49 if gate done	Delivered April 2014
2. Improving accessibility for all user groups	4 seats; 2 bins; entrance sign with notice board	£7,566.84	£7,566.84	To be delivered
3. Improving sports provision	Retain and improve Bowling provision: Improved fencing of bowls facility in Kings Head Lane Park alongside funding from Severn Vale bowls club, if the lease can be extended.	Delivery of PGSS policy AS4 Retain existing car park		
4. Improving access to wildlife	Plant trees (natural species) in South West Corner. The area could be allowed to scrub up with species such as blackthorn.			

Headley Lane Park

Friends of Group in place?: Yes

Contact Details:

Website:

Funding History (from 2011):



Spending Priority	Objective	Approximate cost	s106 allocation agreed by Neighbourhood Committee	Notes
1. New and improved play spaces	Improved play equipment in Headley Lane Park	?		
2. Improving accessibility for all user groups	new railings, to improve security and appearance of Park		£10,871.27	Delivered March 2014
2. Improving accessibility for all user groups	Path very wet and marshy leading into Headley Park – access needs to be improved.			

Lakemead Grove

Friends of Group in place?:

Contact Details:

Website:

Funding History (from 2011):



Spending Priority	Objective	Approximate cost	s106 allocation agreed by Neighbourhood Committee	Notes
3. Improving sports provision	Multi Use Games Area (MUGA) Highridge United Football Club's home is Lakemead Grove Sports Ground, therefore, a MUGA would not only benefit the local community but also allow community links to further develop with the Club which has a thriving junior section recognised by the Football Association Charter Standard award.	?		Delivery of PGSS policies CY2 & AS4

Highridge Common

Friends of Group in place?:

Contact Details:

Website:

Funding History (from 2011):



Spending Priority	Objective	Approximate cost	s106 allocation agreed by Neighbourhood Committee	Notes
2. Improving accessibility for all user groups	New or improved seating; Improved paths at the following sites highlighted as the highest priority –Highridge Common; New and improved information boards and signage;			
2. Improving accessibility for all user groups	Litter bin provision at Highridge Common is a priority			

Spending Priority	Objective	Approximate cost	s106 allocation agreed by Neighbourhood Committee	Notes
5. Action plans	Management Plan Path (Subject to South Bristol Link implementation)			

Withywood Park

Friends of Group in place?: Yes

Contact Details:

Website:

Funding History (from 2011):



Spending Priority	Objective	Approximate cost	s106 allocation agreed by Neighbourhood Committee	Notes
2. Improving accessibility for all user groups	New and improved information boards and signage	£1,313	£1,313	
2. Improving accessibility for all user groups	Reduce flooding to improve access - Improve drainage on grass by Play Pod	£926.00	£926.00	
4. Improving access to wildlife	Wildflower meadow			

Willmott Park

Friends of Group in place?: Yes

Contact Details:
Website:

Funding History (from 2011):



Spending Priority	Objective	Approximate cost	s106 allocation agreed by Neighbourhood Committee	Notes
1. New and improved play spaces	Provide more play equipment and maintain existing play provision on Wilmott Park Small childrens play equipment on the Stillingfleet Road site	£16,000 - £59,000	£30,895.39	Additional funding needed
4. Improving access to wildlife	Connection of the park through small clumps of wildlife friendly areas: such as hedgerow in denser areas. Create a copse area;Wildflower area.	£1,000		

Valley Walk

Friends of Group in place?: Yes

Contact Details:

Website:

Funding History (from 2011):



Spending Priority	Objective	Approximate cost	s106 allocation agreed by Neighbourhood Committee	Notes
1. New and improved play spaces	Provide a new small childrens play area on Valley Walk	?		
2. Improving accessibility for all user groups	New or improved seating: Seating at the following sites highlighted as the highest priority – Valley Walk including Maceys path	?		

Spending Priority	Objective	Approximate cost	s106 allocation agreed by Neighbourhood Committee	Notes
2. Improving accessibility for all user groups	Improved paths: Also a priority for Valley Walk.			
4. Improving access to wildlife	<p>Maintain as a green corridor and encourage the hedging that is already present</p> <p>Extend the uncut margin along the stream</p> <p>New and improved information boards about wildlife and signage including Maceys path</p> <p>Litter bin provision at Valley Walk is a priority.</p> <p>Benches</p> <p>Accessibility (gates not accessible for pushchairs and wheelchairs)</p>	<p><£500</p> <p>Notice board plus installation = £1,200 £650 plus £150 installation £800 - £1,200 per bench</p>	£5,000	Additional funding needed

Court Farm Road Open Space

Friends of Group in place?: Yes

Contact Details:
Website:

Funding History (from 2011):



Spending Priority	Objective	Approximate cost	s106 allocation agreed by Neighbourhood Committee	Notes
1. New and improved play spaces	Provide play equipment designed for all age groups including older children on Court Farm Road Open Space	?		
3. Improving sports provision	An effective young peoples zone would be created alongside new play provision. Provide a pump track	?		Delivery of PGSS policy CY2
4. Improving access to wildlife	Maintain and clean stream - keep current habitats			

Belland Drive

Friends of Group in place?: Yes

Contact Details:

Website:

Funding History (from 2011):



Spending Priority	Objective	Approximate cost	s106 allocation agreed by Neighbourhood Committee	Notes
2. Improving accessibility for all user groups	Improve access			Put through green area to Rookery – via cycling funding in BCC

St Augustine's Park

Friends of Group in place?: Yes

Contact Details:

Website:

Funding History (from 2011):



Spending Priority	Objective	Approximate cost	s106 allocation agreed by Neighbourhood Committee	Notes
4. Improving access to wildlife	<p>Increase natural wildlife interest area but not to the detriment of potential play space.</p> <p>Improve frontage on Whitchurch Lane to add wildlife value.</p>			

Dundry Slopes

Friends of Group in place?: Yes

Contact Details:

Website:

Funding History (from 2011):



Spending Priority	Objective	Approximate cost	s106 allocation agreed by Neighbourhood Committee	Notes
1. New and improved play spaces	Provide natural play equipment for all age groups on Dundry Slopes by Bowering Close	£16,000 - £59,000		
2. Improving accessibility for all user groups	New and improved information boards and signage at Dundry Slopes as the highest priority; Improved paths for Dundry Slopes	Notice board plus installation = £1,200 £3,000		£2,500 funding from Community First for path improvement
4. Improving access to wildlife	Plant traditional trees Explore the possibility of a country park on the slopes.			
5. Management plans	Create a management plan as a natural space.	£2,000 - £5,000		Potential funding identified from Natural England – group developing funding application.

Manor Woods Valley Local Nature Reserve

Friends of Group in place?: Yes

Contact Details:

Website:

Funding History (from 2011):



Spending Priority	Objective	Approximate cost	s106 allocation agreed by Neighbourhood Committee	Notes
2. Improving accessibility for all user groups	Path Link at Dam			
5. Management plans	Management Plan			

Crox Bottom

Friends of Group in place?:

Contact Details:
Website:

Funding History (from 2011):



Spending Priority	Objective	Approximate cost	s106 allocation agreed by Neighbourhood Committee	Notes
5. Management plans	Progress ideas in Management Plan			

Appendix 1

Outstanding agreed NP funding priorities still to be completed at April 2014

1. New and improved play spaces

Spending Priority	Objective	Approximate cost	s106 allocation agreed by Neighbourhood Committee
4. Provide natural play equipment for all age groups on Dundry Slopes by Bowering Close		£16,000 - £59,000	
5. Provide more play equipment and maintain existing play provision on Wilmott Park	Small childrens play equipment on the Stillingfleet Road site	£16,000 - £59,000	£30,895.39

2. Improving accessibility for all user groups

Spending Priority	Objective	Approximate cost	s106 allocation agreed by Neighbourhood Committee
None outstanding			

4. Improving access to wildlife

Spending Priority	Objective	Approximate cost	s106 allocation
2. Wilmott Park	Connection of the park through small clumps of wildlife friendly areas: such as hedgerow in denser areas. Create a copse area. Wildflower area.	£1,000	

Spending Priority	Objective	Approximate cost	s106 allocation
6. Dundry Slopes New and improved information boards and signage and improved paths	Create a management plan as a natural space.	£2,000 - £5,000	Community First and Wellbeing funding approved
	Plant traditional trees		
	Explore the possibility of a country park on the slopes.		
	New and improved information boards and signage at the following sites highlighted as the highest priority Dundry Slopes.	Notice board plus installation = £1,200	
	Improved paths for Dundry Slopes	£3,000	
9. Valley Walk	Maintain as a green corridor and encourage the hedging that is already present	<£500	£5,000
	Extend the uncut margin along the stream		
	Info boards about wildlife	Notice board plus installation = £1,200	
	Bins	£650 plus £150 installation	
	Benches	£800 - £1,200 per bench	
	Accessibility (gates not accessible for pushchairs and wheelchairs)		

Appendix 2

Uncommitted Section 106 funding and CIL funding available at April 2014

Permission / site / s106 code	Value	Date to be spent / committed by	Allocation remaining
09/03863 / 63 Turtlegate Avenue, Withywood / ZCD...902 (Bishopsworth)	£8,604.88	No Limit	£621.93 in this S106
09/03840 / Withywood Methodist Church, Four Acres, Withywood / ZCD...903 (Bishopsworth)	£10,951.68	No Limit	£1,145.84 in this S106
06/05540 / Amelia Nutt Clinic, Queens Road, Withywood / ZCD...615 (Bishopsworth)	£18,878.09	22 Nov 12	£42.49 underspend in this S106
TOTAL			£1,810.26

Community Infrastructure Levy site	Value	Date to be spent / committed by	Allocation remaining
93 Tanorth Road, Whitchurch Park	£712.50	No Limit	£712.50

Neighbourhood Management Service update

A briefing note was sent to Neighbourhood Partnerships in early May to update you on our staffing changes. As promised, more details about this are provided here.

Across the council, services are working to a three area model based on the neighbourhood working areas (north, east central, south). This is to enable better delivery of services within neighbourhoods. Some partners such as the police are also working to the same three area model.

A number of staff within the Neighbourhood Management service have elected to take voluntary severance, and this has resulted in some changes in personnel within the teams that work with Neighbourhood Partnerships. Our new structure, with details of the jobs and the people who will now be doing them, is detailed below:

Your area [north, east central, south] will be managed by an **Area Neighbourhood Manager** [insert name]. The responsibilities of the area manager are as follows:

- Bringing together shared agendas and improving shared services across the neighbourhood area [north, east central, south]
- Manage staff in the neighbourhood area and a cross city team [business support/street scene enforcement/community development].
- Lead on one of three cross cutting citywide themes for the team:
 - Governance (including the neighbourhood partnership review)
 - Improving service delivery
 - Community development and active citizenship

The lead officer for your Neighbourhood Partnership is [insert name], the **Neighbourhood Partnership Coordinator**. Each NP Coordinator will manage two neighbouring NPs.

The community engagement and neighbourhood priority delivery in your area will be carried out by **Neighbourhood Officers**. These officers will support the forums and other community engagement for the NP, and will also undertake community engagement, problem solving and priority delivery for your neighbourhood priorities. Some interviews still need to happen for these posts, currently the officers allocated to your area are [insert names]

The **Community Development team** has been designed as a citywide team, and will retain a clear connection with neighbourhood partnerships to deliver community development which supports NP aspirations, as well as broader community development work across the city. The work programme for this team is currently being designed, and we will share the plans for this team when they are ready.

The **Street Scene Enforcement team** has joined the neighbourhood management service and will deliver against neighbourhood priorities as well as undertaking hotspot work based on analysis of cleanliness and crime data.

Neighbourhood Partnership Review Update

At your March meeting you received an update on the NP review which included a summary of the first steps which we were proposing:

- Unringfencing the devolved budget.
- Implementing a neighbourhood services charter
- Identify and implement efficiencies for improved delivery
- Implementing a programme of citywide events

Update:

- The removal of the ring fence for the devolved budgets (Local Traffic, Clean and Green, Wellbeing) is a Mayoral decision and a paper is being submitted to the Mayor in June. Confirmation of the decision will be provided for you verbally at your meeting or via your NP Coordinator if the decision hasn't yet been made by the date of your meeting. Removing the ring fence doesn't mean that your NP has to change the way that you currently allocate your money. However, if you would like to spend money on some different things, you may want to start talking about what you would like to change. Your NP Coordinator has some guidance available to help with this.
- We would like to invite representatives of your neighbourhood partnership to the first citywide event on **Saturday 9th August 2014** in order to work with us to progress some of the above. We would be grateful if you could identify some reps from you NP to attend. Ideas of things to cover are:
 - Neighbourhood partnership plans - what is the best type of plan and how will they be used to allocate the neighbourhood (unringfenced) budget?
 - Neighbourhood services charter – which services would you like to work with first?
 - Improved and reduced paperwork and reporting
 - Improving communications
 - How do we show that NPs are effective and good value for money?
 - Developing a 3 year programme for citywide events

Parks approach to Grounds Maintenance Service – proposal for NPs

Last year as part of the Neighbourhood Partnership review questionnaire we asked what should be decided or influenced locally in the future. 3250 responses to the survey were received. Parks and green / open spaces was the third most frequent response to this question. Additionally, in the consultation focus groups, you told us that you wanted to be able to influence the design of the services and contracts that are provided by the council.

Proposal from BCC's Parks department

The council's parks department would like to adapt the council's grounds maintenance service to respond to the priorities of the Neighbourhood Partnerships.

Definition of Grounds maintenance service: Grounds maintenance, grass cutting, litter picking, shrubs, maintenance of assets within green spaces

Parks would like to work with NPs to influence and prioritise what is important in relation to grounds maintenance in their area.

There will be a clear budget to pay for grounds maintenance services and we will use that as a guide to assist you in sharing your views with us on priorities.

We will reshape the service according to your priorities in each of the 14 NP areas. From this we will be looking at what are the services that we will deliver the same across the city and what may be more tailored to each NP according to priorities.

Whilst we are working with you in the next year/18 months on this, we will also be considering how we can deliver a longer term service which delivers to your needs for the next 5-10 years. This will include considering who the best provider of the service will be.

What we are asking from NPs

1. Each NP to tell us whether they want to be involved and to give their initial thoughts and comments
2. NPs to decide how they want to progress this within their NP area (e.g. through an environment subgroup, special meeting, themed forum...)

Budget context

Parks has been impacted by the £500k saving it has to make from 2015/16, and also from the staff reductions as a result of the council-wide restructure. We are taking this opportunity to bring services together (e.g. caretaking, estates, parks) to achieve greater flexibility and speed of response, as well as economies of scale.